



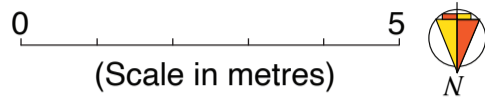
**279 Rundle Street, Adelaide**

**ESTIMATED NET LETTABLE AREA**

Ground Floor	70 sq. metres
Basement	68 sq. metres

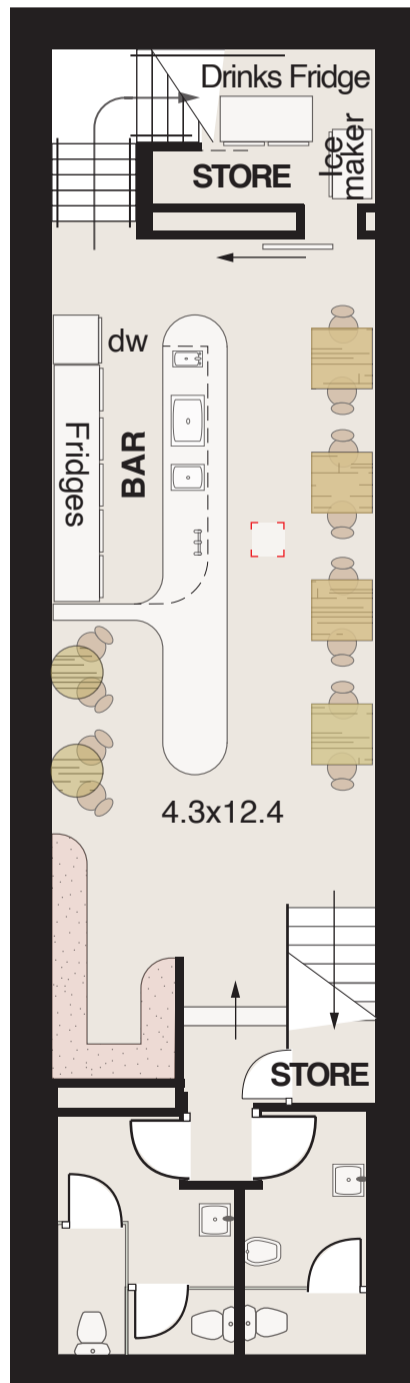
Total Net L.A.	138 sq. metres
Al Fresco (approx.)	15 sq. metres

Complies with the PCA Method of Measurement



a/c outlets

**Basement**



**Ground Floor**

