

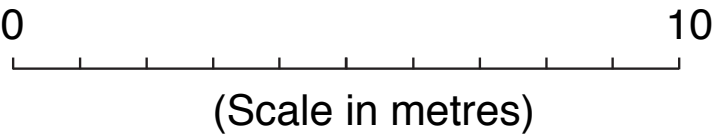
12 - 22 Richmond Road, Keswick- First Floor

ESTIMATED NETT LETTABLE AREA

Vacant Ground Flr	233 sq. metres
Vacant Levels 3&4	19 sq. metres
Smart Health	410 sq. metres
SA Power Networks	548 sq. metres

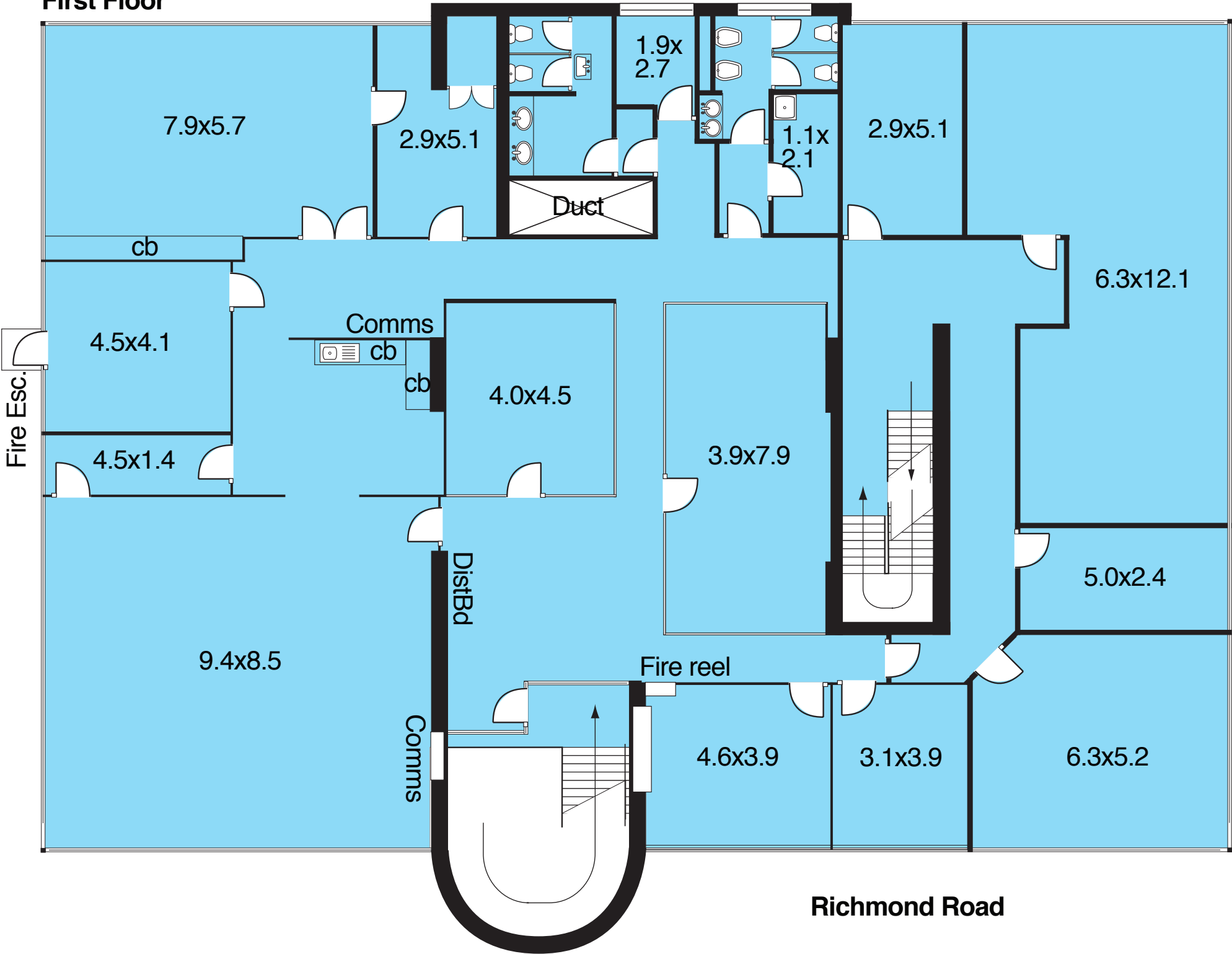
Total Nett L.A.	1,210 sq. metres
Common Areas	143 sq. metres

PARKING

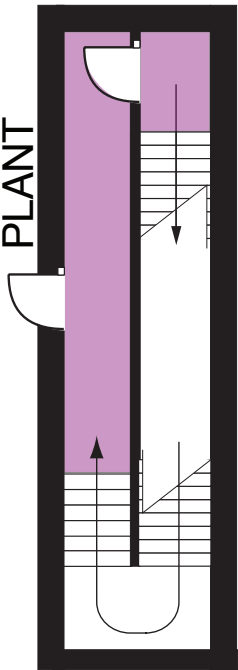


Complies with the PCA Method of Measurement

First Floor



Level 3



Level 4

